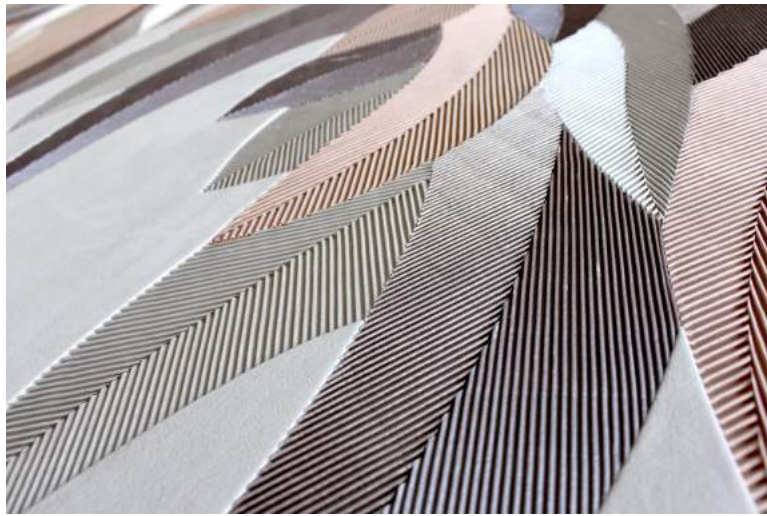


# QUIET PALM



## GENERAL INFORMATION

The Quiet Palm panel is upholstered by hand with Majilite and 100% silk. The fine pleat work is set into the suede using a surgically sharp scalpel. The 3 different shades of silk are cut in contrasting directions, on and against the bias to maximise light play and to give subtle colour difference. Bespoke sizes and alternative patterns are available. The panel is framed with solid brass.

## APPROX. DIMENSIONS

MM

Height	1010
Width	1810
Depth	25



AIVEEN DALY

All designs are copyright Aiveen Daly Ltd 2016 ©  
2 Letchford Gardens London NW10 6AS +44 (0)208 962 0044 info@aiveendaly.com www.aiveendaly.com